

Benefits and end use



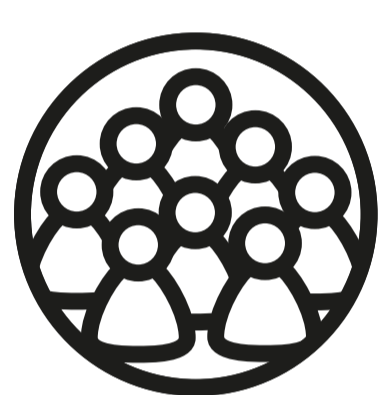
Employment

To operate the landfill, approximately 30 to 40 permanent full time staff and 15 to 30 contractors and consultants would be employed. These jobs might include administration, maintenance, environmental protection and construction.



Local business

A range of construction contractors, trades as well as hospitality and mechanical services will be needed when constructing and operating the landfill.



Community trust

The landfill will create and donate to a local independent community trust. The trust will support local activities and events to support the community.



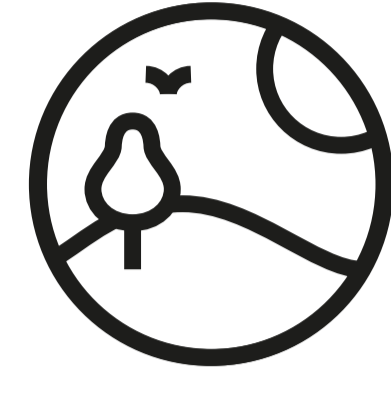
Electrical supply stability

After a few years, the landfill will deliver electricity to the grid, to help improve stability of supply.



Gas supply

A constant supply of landfill gas can be used to provide renewable energy to local industry nearby.



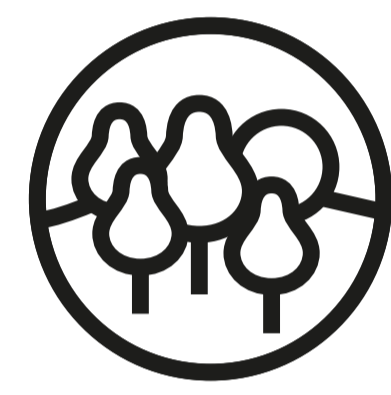
End of life use

When the landfill comes to the end of its life, it will become available for alternative uses such as open space recreation or light commercial activities.



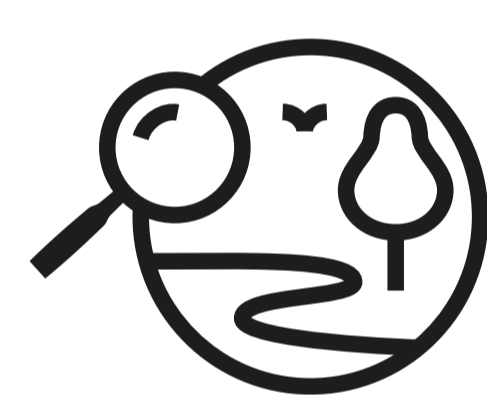
Wildlife habitat enhancement

Wetlands will be constructed downstream and a number of existing waterways will be protected by fencing and riparian planting.



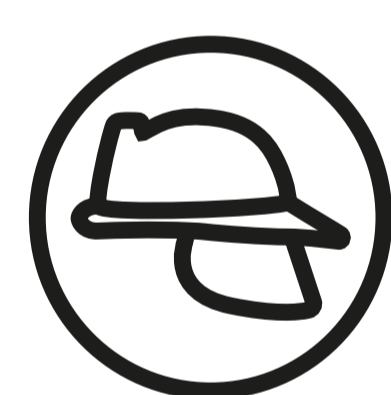
Protection of bush reserves

Adjacent reserve and native bush will be given an extra degree of protection through improved fencing and restrictions on further development.



Environment records

The landfill will be required to monitor ponds and streams providing data for research.



Firefighting water storage

Ponds will collect and retain stormwater, and be available as additional firefighting reserves.



Community benefit

The buffer land around the landfill can be used for suitable community use such as walking trails and cycling tracks.



For updates about the proposed Auckland Regional Landfill visit wastemanagement.co.nz/arl

Questions? Call **0800 927 837** or email arl@wastemanagement.co.nz