

# DAIRY FLAT NEWSLETTER

Produced by the Redvale Landfill Community Liaison Committee  
and the Dairy Flat Community Trust

Publisher – Waste Management NZ Ltd  
August 2017

Delivered by – Silverdale Pony club  
Volume 25 Number 2

## REDALE LANDFILL COMMUNITY LIAISON COMMITTEE

Current members:

Rob Leinwand ----- Chairman & Resident Liaison Officer  
John McLean ----- AC  
Nigel Donovan ----- AC  
Louise Johnston-----AC  
Bob Gibbs ----- Local Resident  
Bill Earwaker ----- Local Resident  
Kirk Storie ----- Local Resident  
Richard Croker----- Local Resident  
Stephen Walker ----- Local Resident  
David Hardy ----- NHTCC  
Debbie Marshall ----- DF Primary School Principal  
Mark Drury ----- Peer Review Panel  
Fiona McKenzie ----- Manuhiri Kaitiaki Charitable Trust  
Chris Wills ----- Waste Management  
Andy Vosper ----- Waste Management  
Rob Bailey ----- Waste Management

The Committee's role is to allow issues and concerns relating to the operation of the landfill to be debated and negotiated. Should you have any questions or concerns regarding Redvale Landfill please contact Andy Vosper on 09 427 0600 or your nearest Liaison Committee member.

Members were elected to the Committee by the community or have been appointed to represent particular interest groups. **Minutes of the meetings are available for perusal at the Waste Management NZ Ltd office.** Any member of the public is able to attend and be heard at these meetings as long as at least two days' notice is given to the Secretary, Steph, via email - [Redvale@wastemanagement.co.nz](mailto:Redvale@wastemanagement.co.nz)

Our next scheduled meeting at the Waste Management Office – 14<sup>th</sup> August & 13<sup>th</sup> November 2017.

## DAIRY FLAT COMMUNITY TRUST



### Current Trustees:

*Julie Earwaker*                      *Steven Earwaker*  
*Graeme Stubbing*                  *Treve Kunzli*  
*Susan Whineray*                  *Andy Vosper*  
*Mark van Dam*

*The Dairy Flat Community Trust is a charitable Trust to administer and distribute monies provided for the*

*Community of Dairy Flat by Waste Management NZ Ltd.*

*Please see our Trust website:*  
[www.dairyflatcommunitytrust.co.nz](http://www.dairyflatcommunitytrust.co.nz)

*Should you have any questions concerning the Trust, please contact:*

*Secretary – Steph Dryland - Ph: 427 0600*

## Community Liaison Chairman's Comment

### CHAIRMAN'S REPORT: A FEW HOME TRUTHS....

At the May CLC meeting a committee member questioned Waste Management (WM) about being "a good neighbor." This was in reference to WM supporting an application for a concrete tank company to operate at 63 Richards Road. Perhaps it is time for a different perspective regarding the WM Redvale Landfill and the Auckland Council.

The Redvale operation began in August 1993 with an operational permit approved by the Rodney District Council. The site was owned and operated by Waste Management NZ Ltd. The company was purchased in 2006 by Transpacific Industries headquartered in Melbourne, Australia. Ownership of WM changed again in 2016 with its purchase by Beijing Capital, based in Beijing, China. It should be noted that the sell price in 2016 was approximately NZ \$980 million... close to a billion dollars! In the year 2000 the average number of trucks bringing loads to the landfill was 123 per day. The most recent consent condition allows 325 trucks per day. The Redvale landfill has grown substantially. It would have been much easier to be a good neighbor when the operation was about 1/3 of its current size. Today WM is a substantial company, headquartered on Lunn Ave. Mt. Wellington, Auckland, and operating landfills at Whitford and of course Redvale, on the North Island. The Chinese owners purchased the company for its technology, as there is substantial evidence that Redvale is a progressive and well managed landfill, and for its profitability.

Hibiscus Tanks have applied to operate at 63 Richards Road and would be a direct neighbor of WM. The tank company approached WM and entered into an agreement with them. Hibiscus Tanks would not complain about odour, noise, dirt on roads etc, and WM would support their application with the council. Whilst residents might not like it, this is good business for both parties. WM gets a neighbor that will not be complaining to council, and the tank company gets significant support for their application. It is a win-win situation for both parties. Hibiscus Tanks operation would be a non-complying activity on Richards Road. However, their compliance issues have nothing to do with WM. If granted, the resource consent will be issued by the Auckland Council, with advice from their planners, and the issue of compliance rests strictly with them. Rather than question WM at CLC meetings, resident's time and energy would be better utilized making their concerns heard by the Auckland Council planners who are the ultimate decision makers, unless the issue reaches the environment court.

The Redvale landfill is a profit generating operation for WM. The team at Redvale are charged with the operation of the landfill. It is their top priority. While they work hard towards being a good neighbor, profitable operation of the landfill is why they go to work each day. The team is very receptive to complaints about odour, noise, dirt on roads, excessive truck numbers etc.

So, what is the best that residents living near the landfill can hope for? **The best possible situation is the landfill will be operated at or below its current consent conditions.** There is a huge amount of anecdotal evidence, showing operation in breach of odour, and noise consent conditions. Odour should not extend beyond WM "notional boundary" and noise should not exceed 50 dB during day time operations.

The Auckland Council is charged with enforcement of consent conditions, with respect to odour and noise. The council employs specialists to monitor these parameters throughout its environs. Certainly WM is culpable for generating noise and odours. **The fact that they can continue doing so falls on the lack of enforcement by the council.** For the people living on Horseshoe Bush Road, and Richards Road, the lack of odour monitoring and enforcement by the council is legend. For folks living on Tender Road, the lack of noise monitoring and enforcement is legend. Complaints from residents about odour and noise continue, although at a reduced rate due to WM corrective actions. However, complaints do continue, with 15 being tabled at the May CLC meeting. Complaints lodged with the council simply appear as items on a complaint register. The council does not appear to take any action other than registering the complaint. This is clearly a dereliction of their duty.

Residents who experience odour, noise or other complaints about the landfill should definitely advise Redvale personnel by calling 427 0600, **and should also call the council and advise them of the non-complying condition.** **The complaints number for the council is 09 377 3107. Be sure to state that the complaint is about the Redvale landfill not meeting their consent conditions.** Perhaps the council will take some action if the number of phone calls they receive escalates sufficiently. Based on experience I would not hold my breath.

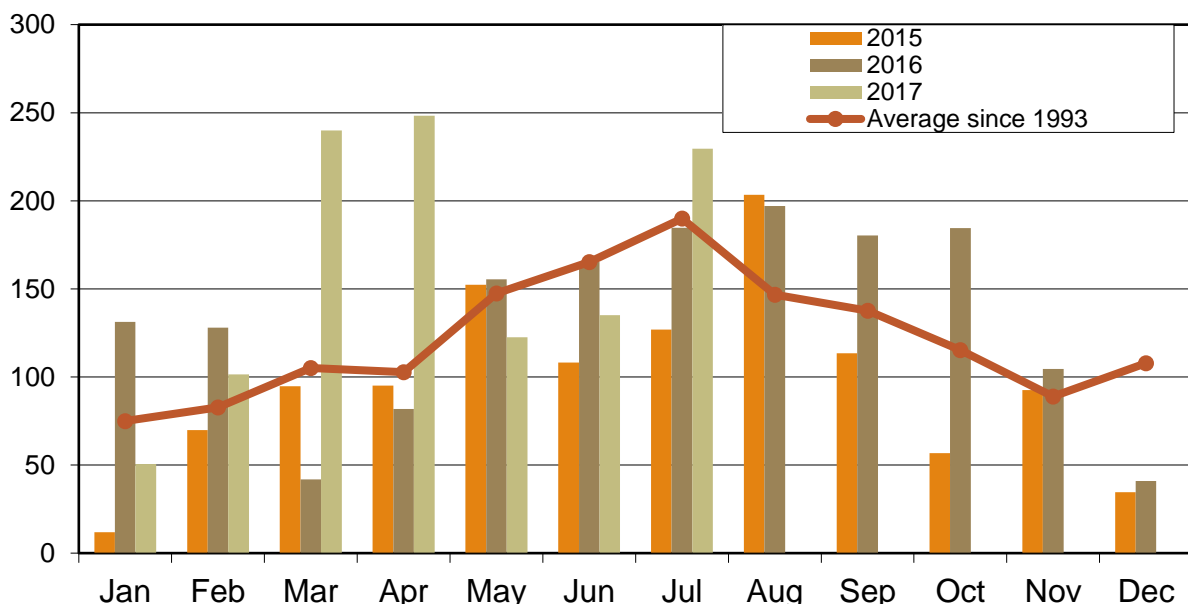
Hi from the Waste Management Redvale team.

With the prolonged wet weather, all construction works have been closed off for winter. As you can see from the rainfall records, we have experienced rainfall significantly higher than average in July, with 240mm recorded, compared to 190mm, as well as the high rainfall months of March and April. Erosion control work has been undertaken on finished and intermediate cover slopes. This work is now complete, with topsoil and seeding work completed on all external slopes, as well as internal intermediate cover slopes on the landfill. Landfilling has over the last few winter months been located in a low central area, accessing from the RL80 level, utilising the surfaced internal roads right up to the tip pad. This, together with the additional cattle grid type interceptor and rumble strips is making a significant difference to the roading improvements. We have invested in additional standby pumps for the wheel washes, and surface water ponds, as well as additional contingency power supplies in the event of a power trip on the 33kV lines outside the site. These contingency measures will provide greater security during storm events, and we've certainly had our fair share of these, this year. The engineering team are currently working on site development plans for the next 5 years, and how we can best handle the soil volumes being delivered from all the redevelopment projects in the CBD and on the Shore. The gas management systems are now back to normal, after the interruptions in April, May and early June, as we have now filled across and above the problematic slope area, which was causing odour issues. The gas and operations teams have worked hard at reducing the risk of offsite odour, and will continue to give it our No 1 priority.

We are seeing more use of the electric vehicle charging points at the office, as the company continues to convert its light vehicle fleet. The first of our electric collections trucks can also be seen on the roads of Auckland. Here at Redvale, we will be expanding the apprenticeship programme in the months ahead, with additional positions available in the workshop. Currently we also have vacancies for experienced equipment operators, gas technicians, and as company we have opportunities for good drivers (class 4 and 5) for our Auckland municipal and commercial collections teams. Anyone interested to find out more please drop by or phone Stephanie at reception.

It is great to see the work of the Dairy Flat Community Trust continuing to provide a very positive benefit to the community. We wish the outgoing retiring chairman, Greg Taylor good luck in his new ventures in Tauranga. He has provided outstanding service to the community for over 20 years. All the very best Greg and Cathy.

### REDALE LANDFILL - RAINFALL





**Feeling Fab Charitable Trust**

12 Aileron Rise

Dairy Flat

Auckland 0794

Phone: 0211373155

[www.feelingfab.co.nz](http://www.feelingfab.co.nz)

*I would like to introduce you to the Feeling Fab Charitable Trust established November 2016.*

*We are a non-profit organisation who provide pamper days for those who have experienced grief, caregivers and individuals who are in need through a variety of unfortunate circumstances.*

*Our aim is to provide a safe nurturing environment for women to experience a full day of pampering.*

*We are here to help them to leave the blanket of grief and their worries at the door. They will be pampered by our most caring and understanding volunteers. Starting with a massage/Reiki or healing and followed by a makeover and hair styling. There are also goodie bags for them to be able to take home and enjoy. Yummy food is provided throughout the day.*

*Our aim is to give back some of the love, support and tenderness that seems to disappear when we are faced with grief or overwhelmed by life. This is also a great opportunity to connect with others who are going through similar experiences, something which bereaved people generally find really helpful.*

*We have received fantastic feedback from the women who have attended and the volunteers who have given up their time freely to support them and make these days possible.*

*Please take a moment to have a look at the short video that is on our website at [www.feelingfab.co.nz](http://www.feelingfab.co.nz) as this will give you an example of what our pamper days entail.*

*We are always looking for volunteers to help us on the days and any donations of goodies to put in the giveaway bags for our ladies.*

*Kind Regards,  
Elizabeth York,  
Founder,  
Feeling Fab Charitable Trust*

### **Greenpark Preschool**

*Term two has been a very busy one at Greenpark Preschool. The children's love of stories led to a book focus early in the term. The children made up their own stories and illustrated them. They proudly shared their stories (which became more and more imaginative) with their friends at mat time. We were visited by Liz Morris, a local professional storyteller (ex Orewa Library), who entertained and delighted the children with a selection of books and songs.*

*Our book focus turned to Maori myths and legends. Stories about taniwha really captured the children's imaginations. This inspired some great artwork and the making of a huge taniwha which everyone could walk under.*

*As part of our Matariki celebrations, the children learned poi, action and stick songs, and of course the haka. After many weeks practising, we performed our own kapa haka concert for our family and friends. A visit from the Dairy Flat School Kapa haka group was also a highlight for the children.*

*The concert was a great success, even the taniwha made an appearance. The performance was followed by a morning tea with Matariki star biscuits, which the children had made to share with their families.*

*The amazing win by team New Zealand in Bermuda began a New Zealand pride week, with the children dressing up in 'everything Kiwi'. We are continuing this focus for the rest of the term.*

Check out our website [www.greenpark.net.nz](http://www.greenpark.net.nz).

Greenpark Preschool

### **Silverdale Pony Club**

Winter is a quiet time for us at the club while the grounds are closed.

Silverdale Pony Club members are still out competing though, with good numbers out at Woodhill Sands for the Winter Series and ODE's. Good results too!

The committee meets every month and we are busy preparing for a great summer of pony club rallies and competitions. We have a 10 week Riders without Horses group, starting 17<sup>th</sup> Oct to 19<sup>th</sup> December as well as Adult rides. Pony Club camp also planned for the summer.

Registrations for next season will be 27<sup>th</sup> August 2017 3- 6pm at Waste Management, Landfill Access Rd, Dairy Flat. More info at [www.silverdaleponyclub.com](http://www.silverdaleponyclub.com)

This will be the last update from me as this is the last term I am running Cubs at Dairy Flat Hall. It has been lots of fun over the last eight years, however it is time to pass the baton over to others.

If anyone wants to keep Cubs running or start Kea's or Scouts, please let me know as I am more than happy to give pointers.

The children have enjoyed many wonderful experiences that Scouts is renowned in providing. The 10 children we currently have will go up to Scouts in Orewa and Taiāotea and the younger ones to Orewa Cubs

I would like to say a special thanks to Jenny Forrester, Stephen Murrell, and Emma Lees who stepped up and wore the woggle and also to all the great parent helpers over the years.

Yours in Scouting Jo - Akela, (Rikki Tikki Tavi and Kereru)

Joanne Saunderson

[joanne.saunderson@gmail.com](mailto:joanne.saunderson@gmail.com)

021 119 121

---

### **Community Learning Directory available.**

A Community Learning Directory for the Hibiscus Coast and surrounding communities has been produced to make it easier for people to find out what learning opportunities are on offer in our area.

There are over 140 tutors offering around 180 courses. The section headings are: Art and Craft, Business and Finance, Computing, Food and Cooking, Fitness and Recreation, Music and Dance, Language and Travel, Personal Development as well as a large section for Children and Teens.

Copies are available in the Dairy Flat store, the Orewa and Whangaparaoa libraries and the Citizens Advice Bureau in Orewa.

You can also view the booklet by going to the website [www.hbclearn.co.nz](http://www.hbclearn.co.nz) and clicking on the book cover.

If you are a tutor or know of someone who tutors who would like to be included in the Directory, complete the simple form under 'tutors' on the website.

This is a free service for tutors.

## Birds in the garden

Smaller pockets of bush have led to a diminished range of plant species found in the wild increasing the importance of the home garden to NZ native birds.

Lack of breeding success of some endangered species is thought to be linked with a lack of range of plant foods brought about by this reduced range of food.

Pressure from predators such as cats, dogs, ferrets, rats, and possum, also play a major part.

### What Birds need:

- Water is most important especially in summer.

When supplying water make sure it's in a safe place by placing the bird bath in an open area, with a viewing perch 2-3 m. away. Birds are very vulnerable when they are drinking, or bathing, so a nearby perch is good so they can have a good look around before flying down.

A bath with gently sloping sides is ideal, particularly if slightly roughened to give the birds a good grip. Don't forget to site it in a position where you can observe it in use, without disturbing the bird. I have an old clay plant saucer on a pipe with a small block for the little birds to stand on and this week have watched both tui and wax eye enjoying a good splash.

- Shelter, this gives protection from weather and predators, as well as nesting sites.

A new garden needs a balance of rapidly establishing plants i.e. Manuka, Hebe, Olearia, with slower growing species i.e. kowhai and miro.

- Food, many birds eat a range of fruit, foliage, nectar & insects:

Eaters of insects include fantail and wax eye, both invaluable in the garden eating a range of pests such as the kowhai moth. Wax eye will also eat small berries such as Corokia and Coprosma.

Kanuka/manuka shelter lots of insects under their bark, this is what the brown parrot the kaka searches for when they shred the bark.

Nectar eaters include tui & wax eye. Kowhai flowering in Sept. mountain flax in Oct. and Swamp flax Dec. to Nov. give 3-4 months continuous nectar supply. These birds also will eat small berries. (Tui have helped the privet with its rapid establishment.)

Berries, seeds and leaves are eaten by such birds as kereru (Pigeon) and Tui. While the kereru is the only bird large enough to carry and disperse the large berries of species such as karaka, tarairi, tawapou, etc. they do eat other seeds and leaves so don't despair if you have no room for a large tree. Kowhai leaves are very popular in the spring prior; I witnessed a very irate tui trying to dislodge a kereru from the kowhai it was visiting for the flowers. Puriri is popular as though the main fruiting time is summer it often has some flower or fruit throughout the year, making it a very important food source.

- Protection from pests; there are lots of traps available for a range of pest species as well as a variety of baits. It makes a great difference to the native bird population and you don't have pests stealing your fruit or making themselves at home in your house!

Food and shelter needs to be available all year round if you want to enjoy the company of native birds in your garden through the seasons.

Any further inquiries you can contact me:

Lisa Clapperton

Waitoki Plants

09 420 5455

**D**airy Flat School said goodbye to a teacher – Hannah Swan, this week. She has been a great member of our team and we are very sad to lose her. Hannah has moved to Wellington to begin a new adventure. We have started the term with three new staff members; Anna Hildesley who is teaching in our year 3-4 team, Dafydd Evans and Alison Drew who are working in class rooms to support students. Welcome.

Our Dairy Flat School is growing, reaching over 300 students by the end of the year. The new six classroom block should be completed by October. LZ1 and LZ2 teams are excited to move into their new learning spaces.

The PTA is gearing up for another fabulous Agriculture Day which will be held on the 28<sup>th</sup> October. This is always a great day with animals, food, stalls and lots of fun and prizes. Please come along and support your community school.

We are loving our new upgraded playgrounds and wish to thank the Dairy Flat Community Trust and the school PTA for donating funds towards this large project.

Debbie Marshall  
Dairy Flat School

### DAIRY FLAT COMMUNITY TRUST

Applications for funding assistance are now being called for from individuals and organisations for projects that fall within the general objectives of the Community Trust.

This objective states "for purposes beneficial to those people whose principal place of residence is Dairy Flat."

Applications for post-secondary education scholarships from Dairy Flat residents are also being accepted at this time.

Applications can be submitted by post or scan and email to: [dairyflatcommunitytrust@hotmail.co.nz](mailto:dairyflatcommunitytrust@hotmail.co.nz), on application forms available from:

[www.dairyflatcommunitytrust.co.nz](http://www.dairyflatcommunitytrust.co.nz)

or Dairy Flat Community Trust

PO Box 114

OREWA 0946

Applications open from Friday 28<sup>th</sup> July and close Friday 22<sup>nd</sup> September 2017 @ 5pm.

Only applications received by this closing date (as indicated by postmark or email) will be considered for funding.

Funding allocations will be presented on Sunday 3<sup>rd</sup> December 2017, 4.30pm at Redvale Landfill.



### Dairy Flat Community Hall

Hall Hire: Please go to our website [www.DairyFlatLive.com](http://www.DairyFlatLive.com) or call Alison 09-4263723 (please leave message)

If you want to start classes, etc. in the Hall we will support you.

### DFlat Live Music Venue

Did you know that you have the best live music just on your door step? People from all over Auckland come to DFlat Hall for:

1<sup>st</sup> Thursday of the Month “Jam Night” if you are a musician or a music lover come join us. This is always a great night.

1<sup>st</sup> Friday of the Month “Rockabilly”

1<sup>st</sup> Saturday of the Month “Our Blues night”

2<sup>nd</sup> Friday of the M. “Country Rock”

3<sup>rd</sup> Saturday of the M. “Rock & Roll”

4<sup>th</sup> Friday of the M. “Country Rock”

We also planning some Sunday activities with our Wood Fired Pizza Oven going!!!!

Always check our website first to see what's on.

### **Silverdale Squash Club**

Silverdale was well represented at the World Masters Games held in Auckland earlier this year. We had players entered across most age groups – even the 65+ and we came away with 2 golds, a silver and a bronze! Not everyone won a medal but they all had a great time. The next World Masters is in 4 years' time, so if you haven't tried squash and if you will be over 35 then, begin now and you can enter the 2021 games!

Squash is a great way to keep fit and meet others while having fun at the same time. It doesn't matter if you have never played before – we can show you how and we have raquets which are free to borrow.

For juniors, we our kids' club night is on Wednesdays 4.45 – 6.15. We've got lots of keen juniors taking part. Also tuition is still being run by the club's coach – so if anyone under 16 is interested, email the club at [tonyforde@hotmail.co.nz](mailto:tonyforde@hotmail.co.nz) or see our Facebook page.

We have several Interclub squash teams of all abilities – men and women and several mixed Masters teams. We also run frequent Masters and Open tournaments throughout the year.

For those who want to get seriously fit and really improve their squash, we can offer coaching sessions throughout the week.

We are always looking for new members – new to the game or experienced. Come along to our friendly Club Night on Thursday evenings 7pm onwards and give it a go.

For more information, contact the club president Tony Forde at [tonyforde@hotmail.co.nz](mailto:tonyforde@hotmail.co.nz)

## Chairman's Report 2016/17

It is my privilege to present the Annual Report of the Dairy Flat Community Trust.

Community organizations and individuals in the Dairy Flat area once again benefited by the allocation of funding of \$ 83214.00 made available by the settlor, Waste Management (NZ) Ltd.

Funding for tertiary scholarships totaling \$6500.00 was allocated to 6 recipients.

Eight local organizations shared a total of \$44450.00 in grants. These allocations take into account factors such as the level of benefit to the community, effort to date by the members of the organisation and whether the project can be completed by the amount of the Trust contribution. Numbers of applicants is down and reflects a change in the society where there is a general shortage of volunteers to implement suitable projects for the good of the community.

The completion report from the recipients is a requisite of the funding to ensure that the money has been spent for the approved purpose, and to maintain a permanent record of the community's achievements in years to come. Please make sure you use the funding for the purpose you have applied for and please furnish your report on completion.

The reserve fund continues to grow and it is hoped that with the changing face of Dairy Flat that in the future the Trust will be in a good position to make a significant contribution towards maintaining the character of the district. The Reserve Fund was established in accordance with the resolution of the 1996 AGM and now has in excess of \$200000 invested.

The Oral History project was completed and the recordings are now available through the Takapuna Library. The follow on from this project has been the documenting of the information into a book on the History of Dairy Flat which is nearing completion and is to be published in the near future. Thanks to Lynette Third and Treve Kunzli for their efforts.

Once again, we must extend our thanks to Waste Management (NZ) Ltd, for their grant and our special thanks to Andy Vosper for his continued support as the settlor's representative on the Trust. Michelle Kennedy left WM at the end of 2016 and her efficiency in dealing with the secretarial matters of the Trust will be sorely missed.

Thank you to the members of the Trust for their support over the past year.

This will be my last report as I have moved to Tauranga and not seeking re-election. I have enjoyed immensely the opportunity to serve this wonderful community for the past 35 odd years, including my term on the Trust. It is the envy of many communities around the country and the effort that WM has made to be good citizens, mainly through the fine efforts of Chris Wills for many of those years, is pleasing. The fact that this Trust has a very well defined mission, well delineated catchment area, strict guidelines for distribution of funds honed over the years, and an arm's length relationship with the settlor, Waste Management, augers well for it fulfilling its duties for many years to come. Cherish it!

Greg Taylor  
Chairman

1st August 2017

## **Update from Louise Johnston: The Rodney Local Board, Dairy Flat subdivision**

We have some big challenges facing the Rodney Local Board this term. Rodney represent 46% of the land mass of Auckland but as of 2015 has only 60,000 residents. The population of Rodney is expected to rise dramatically over the next 20 years and Dairy Flat is predicted to be the size of Hamilton. Given that Dairy Flat has no infrastructure it is hard to imagine what it will look like in the future. The future urban business area of Silverdale West and Dairy Flat has been bought forward to 2018 and this is a big change for the area. The rationale behind this move is that people can then live near where the work. I am not 100 % sure how this will work in practice because you tend to change jobs more often than you move house but there is lack of land available for new businesses in the area so this should help fill the gap. The structure planning for the future urban business area of Dairy Flat is scheduled to begin this year and takes about 12 to 18 months to complete. The structure planning identifies key elements of the zone such as roading, public transport, storm and waste water, geotechnical restraints, landscape, the airport and the type of industries/businesses allowed. Effected landowners in the area will be consulted. A draft structure plan will go out for public consultation and I think it very important for Dairy Flat residents to have their say. Once the structure plan is adopted, a plan change will be required to the unitary plan to rezone the area from future urban to the appropriate urban zone.

With all the development in Auckland, expect to see more trucks travelling down our rural roads. The Environment Court awarded consent for 10 year managed fill in Blackbridge Road a couple of weeks ago and another large clean fill is expected to open in White hills very shortly. When Auckland Transport have assessed the safety of our local country roads they have made the assumption that because we don't have bridle paths, footpaths or cycle lanes then there will be no or few non-motorized users. This is clearly not the case and it is becoming increasingly more dangerous to use our roads for leisure purposes. The Good news is that we have secured funding in the Rodney Local Board annual budget for a Greenways Plan for the Dairy Flat Subdivision. A Greenways is a network of paths utilizing council reserves, paper roads, private land and possibly the 154 Hectares of land in Green Road and the Riverhead forest. The plan requires consultation with the community about routes etc. At this stage we do not have dates of when these the sessions will be but I will keep you updated.

Following recent changes, Auckland Transport now have the ability to change speed limits on our roads. Auckland Transport are currently compiling a list of roads to be reviewed and changes will be rolled out from 2018 - 2021. When assessing the roads to be reviewed, AT will look at the crash history, geometry and road usage to determine if a road is eligible for a speed review. For Dairy Flat, I have asked AT to look at reviewing the speed limits of Green, Blackbridge and Horseshoe Bush Road. There are no guarantees that the speed limits will be reduced. Please let me know if there are other roads in Dairy Flat that you think may need to be reviewed.

Please contact me about any of above issues at [louise.johnston@aucklandcouncil.govt.nz](mailto:louise.johnston@aucklandcouncil.govt.nz)