

DAIRY FLAT NEWSLETTER

Produced by the Redvale Landfill Community Liaison Committee
and the Dairy Flat Community Trust

Publisher – Waste Management NZ Ltd
August 2022

Delivered by – Silverdale Pony club
Volume 31 Number 3

You can find past issues at: www.wastemanagement.co.nz/redvale-energy-park-community-liaison/dairy-flat-newsletter

REDDALE LANDFILL COMMUNITY LIAISON COMMITTEE

Current members:

Warwick Hojem-----Chairman
Louise Johnston-----AC
Maxine Joubert-----AC
Bob Gibbs ----- Local Resident
Kirk Storie ----- Local Resident
Andrew McNeil----- Local Resident
Stephen Walker ----- Local Resident
Jennie Hutchinson----- Local Resident
Nick DeWitte----- Local Resident
Allan Nicholas -----NHTCC
Mark Drury ----- Peer Review Panel
Glen Jujnovich ----- Waste Management

The Committee's role is to allow issues and concerns relating to the operation of the landfill to be debated and negotiated. Should you have any questions or concerns regarding Redvale Landfill please contact Reception on 09 427 0600 or your nearest Liaison Committee member. Complaints should be forwarded to redvalecomplaints@wastemanagement.co.nz or 021 190 2018

Members were elected to the Committee by the community or have been appointed to represent particular interest groups. **Minutes of the meetings are available for perusal at the Waste Management NZ Ltd office.** Any member of the public is able to attend and be heard at these meetings as long as at least two days' notice is given to the Secretary, Steph, via email - Redvale@wastemanagement.co.nz
Our next scheduled meetings at the Waste Management Office – 14 Nov 2022.

DAIRY FLAT COMMUNITY TRUST



Current Trustees:

Steven Earwaker	Heather Turley
Treve Kunzli	Barb Stubbs
Elizabeth Mackay-Cotter	Glen Jujnovich
Tony Rouse	

The Dairy Flat Community Trust is a charitable Trust to administer and distribute monies provided for the Community of Dairy Flat by Waste Management NZ Ltd.

Please see our Trust website:
www.dairyflatcommunitytrust.co.nz

Should you have any questions concerning the Trust, please contact:

Secretary – Steph Dryland - Ph: 427 0600

Dear readers,

I write this section of the quarterly newsletter in the week that had the opening ceremony of the Commonwealth Games, Ashley Bloomfield handed over the Director General of Health's reigns to his successor, there were 41 Covid related deaths on Friday, the Russo/Ukrainian war continues and its impact on the world in terms of energy and grain supplies are rippling through most economies and Christchurch recorded its wettest July since 1976 and even here in Dairy Flat, we have had a pretty wet July, too.

The Dairy Flat Community Trust Board held its AGM on Tuesday this week (26 July).

Every quarter, the complaints register is tabled at the quarterly CLC meeting and actions taken by Waste Management and/or Auckland Council Compliance are discussed. Talking about this, Auckland Council has put forward a new process in which the Compliance Team (previously Compliance Response) will respond to all Redvale odour complaints received by Auckland Council as a P1 complaint.

A P1 complaint is given top priority as it is considered high risk and must be attended to as quickly as possible. The process that Council follows for these types of complaints is as follows.

- Complaint lodged with Council's pollution hotline (09 377 3107)
- Complaint is logged with the Compliance Team as P1
- The officer on duty will respond to the odour complaint as soon as practicable.

More information can be found at the Council webpage for reporting pollution to Auckland Council.

Other discussions on the table are around Stockpile 4, the bypass road and vermin/pest control linked to a landfill, to name a few of our agenda items.

The next CLC meeting is scheduled for mid-August and is open to the public.

I mentioned in the last newsletter that the Minister of Transport would be meeting with interested parties at North Harbour Stadium on 14 May at 11am to discuss the North Shore Airport's application for Airport Authority. The meeting was well attended, and pros and cons were tabled, and the Minister summed up what he had heard and undertook to get back to interested parties within 4 to 6 weeks.

On the 13th August, Auckland Council planners are hosting a drop-in session at the Dairy Flat Hall from 11am to 1.30pm to talk about the urbanization of the area and proposed community hubs (mini town centres) as well as all the associated infrastructure ... roading, potable water, waste water removal, etc. All residents in our catchment area are welcome to attend.

In closing, I urge all readers to please support the local businesses who advertise in our newsletter. They would really value your custom.

Take care

Warwick Hojem

VDI scale for reporting an odour complaint

Feedback or Odour complaints can be reported to Redvale Landfill through three different methods,

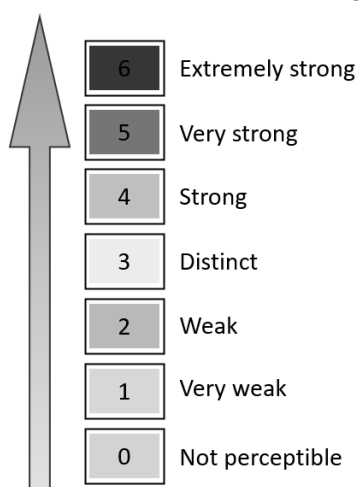
1. Email redvalecomplaints@wastemanagement.co.nz
2. Phone call 09 427 0600 or 021 190 2018
3. Text message 021 190 2018

To work with us, please provide constructive feedback only, which includes the following information,

1. Time and location of the odour
2. Type of the odour
3. Character and intensity of the odour
4. Frequency of the odour – how often it occurs, duration of the odour and time of exposure

VDI scale example below on how to classify odour intensity

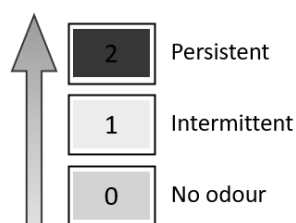
Odour Intensity



Odour Intensity: The perceived strength of an odour above its threshold. It is determined by an odour panel and is described in categories that progress from “Not perceptible”; “Very Weak”; “Weak”; “Distinct”, “Strong”, “Very Strong”, to “Extremely Strong”.

The best way of assessing odour is via the human nose. But everyone reacts to odours differently. One person may object strongly to an odour while another is not bothered by it. The only objective method to assess odours is a calibrated nose that has completed Olfactometric measurement.

Frequency Scale



Odour frequency: The perceived duration of time or exposure experienced.

Please feel free to access Redvale landfill weather station data by using the below link,

<https://app.outpostcentral.com/english/login2.aspx>

Username: redvaleguest

Password: community



Nicola Stuart

C E L E B R A N T

+64 27 269 8025 | nicola@tietheknotnz.com

www.tietheknotnz.com  @tietheknotnz



Weddings cost a fortune but if you want something affordable – would you consider the North Harbour Sports and Country Club with Catering by De Hot Bar and Grill – right here in your back yard?

My aim is to help provide as little or as much help as you need with your event arrangements. You might simply only need my services as a Celebrant, or you may require more involvement like venue arrangements, catering, and photography.

Also available as a Celebrant in the greater Auckland area at your venue of choice.

For more information contact me on nicola@tietheknotnz.com mobile 0272 698 025.

Let's catch up and see if we can work together - no obligation, no charge to have a chat

DAIRY FLAT COMMUNITY TRUST

Applications for funding assistance are now being called for from individuals and organisations for projects that fall within the general objectives of the Community Trust.

This objective states "for purposes beneficial to those people whose principal place of residence is Dairy Flat."

Applications for post-secondary education scholarships from Dairy Flat residents are also being accepted at this time.

Applications can be submitted by post or scan and email to: dairyflatcommunitytrust@hotmail.co.nz. Application forms available from:

www.dairyflatcommunitytrust.co.nz or Dairy Flat Community Trust
PO Box 228
SILVERDALE 0944

Applications open from Friday 22nd July and close Friday 16th September 2022 @ 5pm.

Only applications received by this closing date (as indicated by postmark or email) will be considered for funding. Funding allocations will be presented on Sunday 4th December 2022, 4.30pm at Redvale Landfill.

FEELINGFAB FOUNDATION

Feeling Fab Charitable Trust

12 Aileron Rise

Dairy Flat

Auckland 0794

Phone: 0211373155

www.feelingfab.co.nz

We are a non-profit organisation who provide pamper days for those who have experienced grief, trauma or loss, caregivers and individuals who are in need through a variety of unfortunate circumstances. We have provided this much needed service in our local area for five years now and we have been consistently told - and seen and heard for ourselves - how vital our programme is for those travelling along their journey of grief. As we are growing and hoping to expand from the local area here (Dairy Flat and Warkworth) to throughout Auckland, with our goal of taking our programme NZ-wide, we are looking for volunteers (hair stylists, makeup, nails, general help and sometimes reiki and massage), sponsors and funding opportunities - we need your help to keep our programme afloat! We have had the honour to work with Red Beach Hospice, Women's Refuge Rodney, Sweet Louise, Race 4 Life and Grandparents Raising Grandchildren, just to name a few throughout our Rodney area.

Please check out our Facebook page and our website (www.feelingfab.co.nz) for more information, for testimonials, live streamed videos etc.

WE NEED YOUR HELP!! Please email us on feelingfab2010@gmail.com, or PM us via our Facebook page



Kind Regards,
Elizabeth York,
Founder,
Feeling Fab Charitable Trust

Dairy Flat Community Hall

Contact details: Please E-mail info@DairyFlatLive.com

Hall is available for community use 7 days a week. If you like to start classes or other activities in the Hall, the Hall committee will support you, with low starting rates.

Activities in the Hall

- Yoga on Monday
- Toast masters on Tuesday/ fortnightly
- Every Friday night Rock & Roll on live music/ full bands people travel from all over great Auckland to Dairy Flat for those nights.

Check out what's on: www.DFlat.info

Many locals are very surprised, when they find out what's going on in the Hall on Friday nights. Licensed Bar with Club prices. Cover charge for bands applies.

Hall hire

Hall is available for Parties on Saturday nights. Sorry we don't support 18th and 21st birthday parties in the Hall.

Silverdale Pony Club

Wow, the rain continued to fall throughout July, leaving our riders with muddy paddocks, muddy ponies and muddy saddlery. While our grounds at Green Road have been closed for the winter, many of the Silverdale Pony Club riders have used the off-season to continue their training and compete in show jumping and show hunter winter series. It has been great to see riders and horses out competing again after two Covid interrupted seasons.

Throughout the wet winter, the committee has been planning for the upcoming 2022/23 season. We are looking to hold a Fun Day, an Open Ribbon Day and a Show Jumping event this season. This year we have a great line-up of coaches who are just as keen to get the season started as our riders!

We have opened enrolments for last season's members. If you would like to be part of a fun, family-focused club this season, then we may be the club for you! We cater for all ages and abilities and hold a separate adults-only ride during the week. During the riding season we hold weekly instructed rallies on a Tuesday evening, giving young riders the chance to work through the NZPCA syllabus and gain their certificates. We hold a barbeque at the end of each rally, giving everyone a chance to catch up and relax. We do ask that all prospective members understand the commitments of membership - each family is expected to contribute to working bees and help with the running of events and maintenance of the grounds and club property. The more help we receive, the more our young riders' benefit!

If you are interested in joining we will have limited spaces for new riding members, please email membershipsilverdaleponyclub@gmail.com

Silverdale Pony Club is not a riding school so you must own or lease a pony if you want to attend. For those without a mount, we run a 'Riders without Horses' programme, which is a fabulous way to learn all about the management and care involved in owning a pony. Please note this is not a riding-based course, but still offers pony contact. This will begin later in the season, so keep an eye on our Facebook page or website for updates.

Silverdale Squash Club - Now open to the Public

Casual bookings \$30 per court per hour

To book and pay please go to www.silverdalesquash.helloclub.com/register

We are located in the Silverdale Rugby Club building at 6 Hibiscus Coast Highway opposite the Hibiscus Coast Bus Station.

We have 3 squash courts, clubrooms, a licensed bar and are open 24/7 for playing.

We offer a range of membership options to suit your needs, or you can play casually with no contract.

Club night every Thursday

Why not come down to our friendly club night on a Thursday from 7pm, meet other members and have a few fun games whilst keeping fit. We run 15-minute games and will match you with other members of similar ability. Not a member no problem you can try our club night two times before we ask you to become a member. We have a fully licenced bar so why not stay for a drink and beers are only \$5 on club night.

Introduction to Squash every Sunday afternoon

New to Squash? Ever wanted to have a go, then why not come down on a Sunday from 3pm and we will show you how to hold your racquet, how to hit the ball and match you with other players of similar ability. Don't have any gear – no problem wear comfortable clothes for running and non-marking shoes and we will provide you with a racquet and ball. Bookings essential so you will need to register

- www.silverdalesquash.helloclub.com/register

Juniors

Junior Club night is every Friday during term time and Junior coaching is run during term 2 and term 3 each year. For more information contact our club coach Lara on 021 029 06345.

For further information please contact Hollie on 021 701 456 or

silverdalesquash.president@gmail.com

What are the chances of three immediate family members representing New Zealand the same week?



PHOTO – Brahm, Tina (mum) Tai and Renee

Dairy Flat's Brahm Richards (left) about to Wrestle the world's best of 72 countries in the Commonwealth Games (August 5th). Then sister Renee Richards and fiancé Tai Toniui, Hip-Hop with their elite team 'AMBUSH' at the World Championship in Phoenix, USA.

Brahm has appreciated the encouragement from Club Physical's Te Atatu Club members and Renee (who also Teaches BARRE at the club) and Tai can be seen regularly practicing with their Team in the GROUPE studio at night - both College Dance Teachers during the day (Rangitoto and Manurewa Colleges). As for many of us in NZ, there have been plenty of challenges recently to overcome to get to this point, so please give them plenty of encouragement.

Brahm, Manages Te Atatu Club Physical and is assistant Wrestling Coach

Brahm is seven times NZ Wrestling Champion under various weight groups, and six times NZ Judo champ and holds a Black Belt in Karate. Renee also hold a Karate Black Belt and graduated with Honours from Auckland University Dance. Tai graduated University with his BA Dance

Update from Louise Johnston, Rodney Local Board (Dairy Flat subdivision)

Finally, the sun has come out and the ground has finally been given a chance to dry out. The record rain falls in July have hammered both our unsealed and sealed roads. Please make sure you report any potholes on our roads directly to Auckland Transport (<https://at.govt.nz/about-us/contact-us/>) or phone the AT call center on 09 355 3553.

AT's customer complaints database is an important management reporting tool for AT and elected members. If AT do not receive complaints about our rural roads, they assume that the system is working, and the roads are being well maintained. If your complaints are not actioned in a timely manner, please let me know and I can follow up.

Below are a couple of updates for our area:

Planning for the urbanization of Dairy Flat

Planning has now started for the urbanization of the Dairy Flat future urban areas and Council have not made it easy to follow. There were two simultaneous consultations going on in August and the underlying documents are full of planning lingo and reference plans of plans.

Below is quick summary:

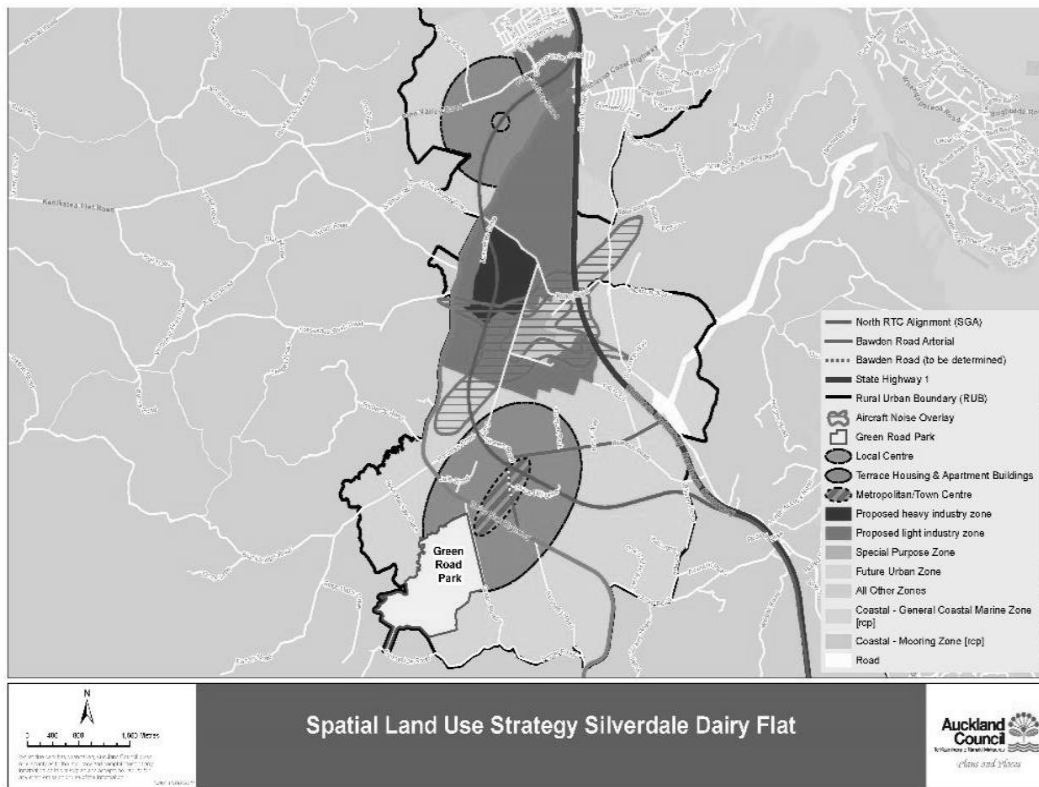
- 1) [Feedback on the proposed town centers and terrace and apartment housing for Dairy Flat](#)

As part of the urbanization of Dairy Flat, a rapid transport network (RTN) is proposed through the future Dairy Flat township. To work out where the RTN stations are to be in Dairy Flat, Council have identified the land next to the Green Road 154 Hectare Park as the preferred location of a proposed town centre and land suitable for terraced and apartment style housing (refer to the below map for details). Council is also proposing a smaller local centre in Pine Valley Road

Many locals are concerned about the impact on flood zones with the proposed location of the town centre, apartments, and terraced housing next to the Green Road Park. We have a blank canvas with Dairy Flat and it is important that we get this planning right and local feedback is important.

The feedback form is a very quick form to complete (link below).

<https://akhaveyoursay.aucklandcouncil.govt.nz/spatial-land-use-strategy-dairy-flat-and-silverdale>



2) Feedback on the Supporting growth transport projects for Dairy Flat:

The supporting growth team is a collaboration between Auckland Council, Auckland Transport and Waka Kotahi (NZTA). They are currently planning the integrated transport networks for when the Dairy Flat area is urbanized and is home to 110,000 new residents. Currently they are looking at protecting the land to enable the future development of these long-term transport projects.

You can provide feedback on the proposed transport projects including the future rapid transit services, future walking and cycling paths, future improvements to SH 1 including additional motorway interchanges and future road upgrades. There is good video summary of the proposed projects on the supporting growth website (refer link below) Personally, I think an important part of the consultation is the priority given to the individual projects. Projects that can ease the current congestion must be given priority e.g., the 4 laneing of Dairy Flat Highway from Stevenson’s Cres to Gills Road to ease the bottleneck at the bottom of Albany Hill and the new motorway interchange at Wilks Road to ease congestion at the Silverdale interchange.

You do not need to provide formal feedback, you can ‘drop a social pin’ directly on road and provide a quick comment on what upgrades are required.

<https://haveyoursay-supportinggrowth.nz/long-term-transport-connections-north-auckland/tell-us-what-you-think>

Feedback for both the proposed town centers for Dairy Flat and the integrated transport networks close on the 19th of August.

There is a community drop-in session on 13 August 2022, Dairy Flat Hall, 4 Postman Road, Dairy Flat 0794, 11am - 1.30pm, Council planners and the Supporting Growth team will be there to answer questions.

Proposed draft Rodney Parks Management Plan:

One of the responsibilities of the Local Board is the management of the local parks within the Rodney Area. There are hundreds of parks within the Rodney area. For parks held under the Reserves Act, the Local Board is responsible for reviewing and preparing reserve management plans. Many of the reserve management plans for parks in Rodney are out of date and rather than update the plans on an individual park basis, Council staff have been working with the local board, on a draft local Parks Management Plan for all our parks. Once adopted this plan will replace the existing reserve management plans for individual parks.

This document is massive, and it is two volumes, one for scope, purpose and policies and other volume detailing individual parks, the park values, and the management intentions. There is an individual document for the Dairy Flat subdivision and parks within Dairy Flat include:

- The Dairy Flat Reserve, Postman's Road. This is classified as Recreation Reserve (Page 34)
- The 154 Hectare Green Road Reserve. This is classified as Recreation Reserve (Page 36)
- The Rangitopuni Stream -Dairy Flat by Landfill access Road. This is classified as Local Purpose Esplanade Reserve (page 44)

All the Pony club leases have been put on hold pending the adoption of this plan and it is important that we get this right and local knowledge is important.

For feedback and documentation refer to the link below.

Feedback closes on the 15th of August.

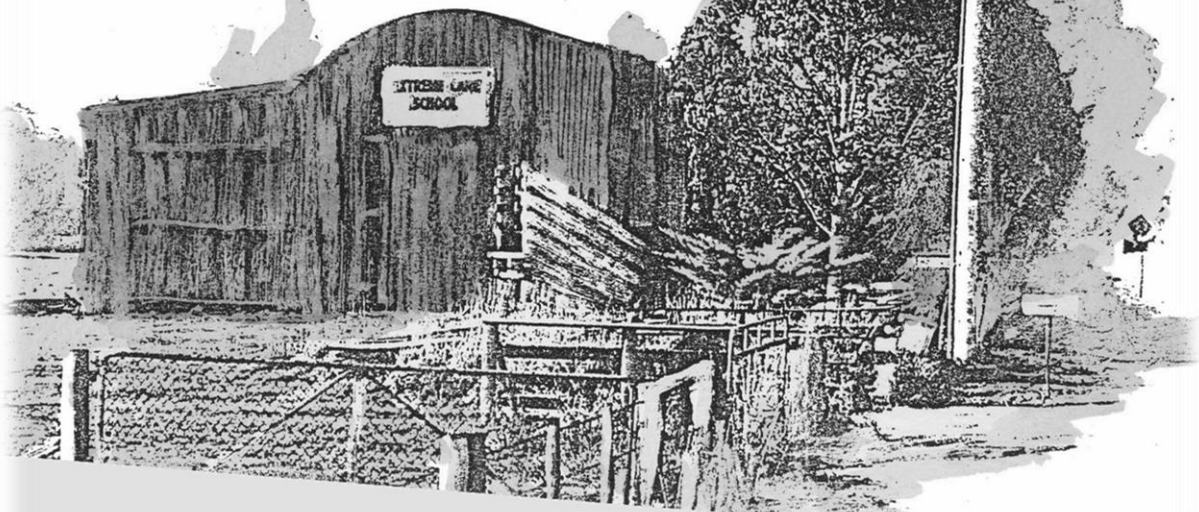
<https://akhaveyoursay.aucklandcouncil.govt.nz/draft-rodney-local-parks-management-plan>

North Shore Aero Club's application for Airport Authority Status:

I was waiting for an update from Minister Wood's office but have not received by the cut off time for this article. Once I get the update, I will post on the local Facebook pages.

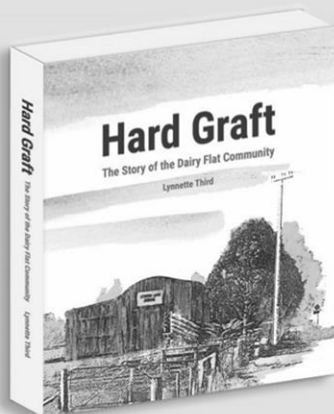
Lastly, it is hard to believe that the political term is almost up, and elections are just around the corner. Thanks for giving me the opportunity to be a voice for Dairy Flat. With the backdrop of Pandemic, it has been an interesting term. I will be standing again as I do not feel I have finished the job.

The Story of the Dairy Flat Community



Hard Graft

By Lynnette Third



ORDER YOUR COPY

Available for \$39 + P&P

Please email or phone the Dairy Flat Community Trust to place your book order.

Please include your name, postal address, postcode, contact phone number (optional)

Email: hardgraft2020@gmail.com

Phone: Barbara Stubbs 09 420 4094

\$39.00 + \$10.00 p&p (\$49.00 in total) to this account with your name as a reference:

Account Name: Dairy Flat Community Trust

Account Number: 12-3046-0249577-51